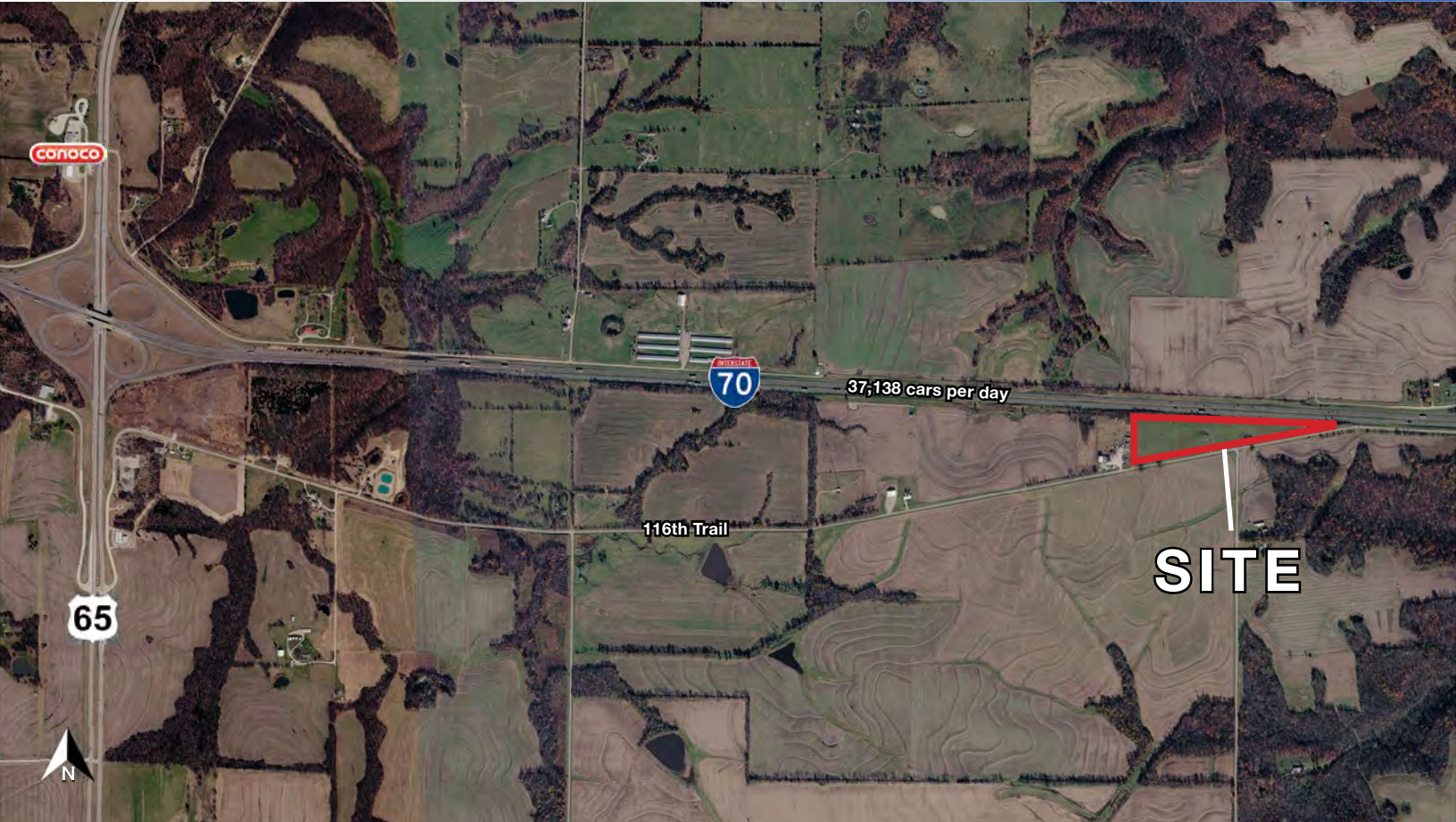




# INTERSTATE 70 DEVELOPMENT LAND

27699 116th Trail Marshall, Missouri



## SALE PRICE: \$160,000 | 14.5 ACRES

### DEMOGRAPHICS

	1 mile	3 miles	5 miles
Estimated Population	4,360	14,121	14,838
Avg. Household Income	\$76,895	\$79,531	\$81,367

- Interstate 70 frontage
- High visibility
- Income producing billboard
- Agriculture and Commercial zoning



CLICK HERE TO VIEW MORE LISTING INFORMATION

For More Information Contact:

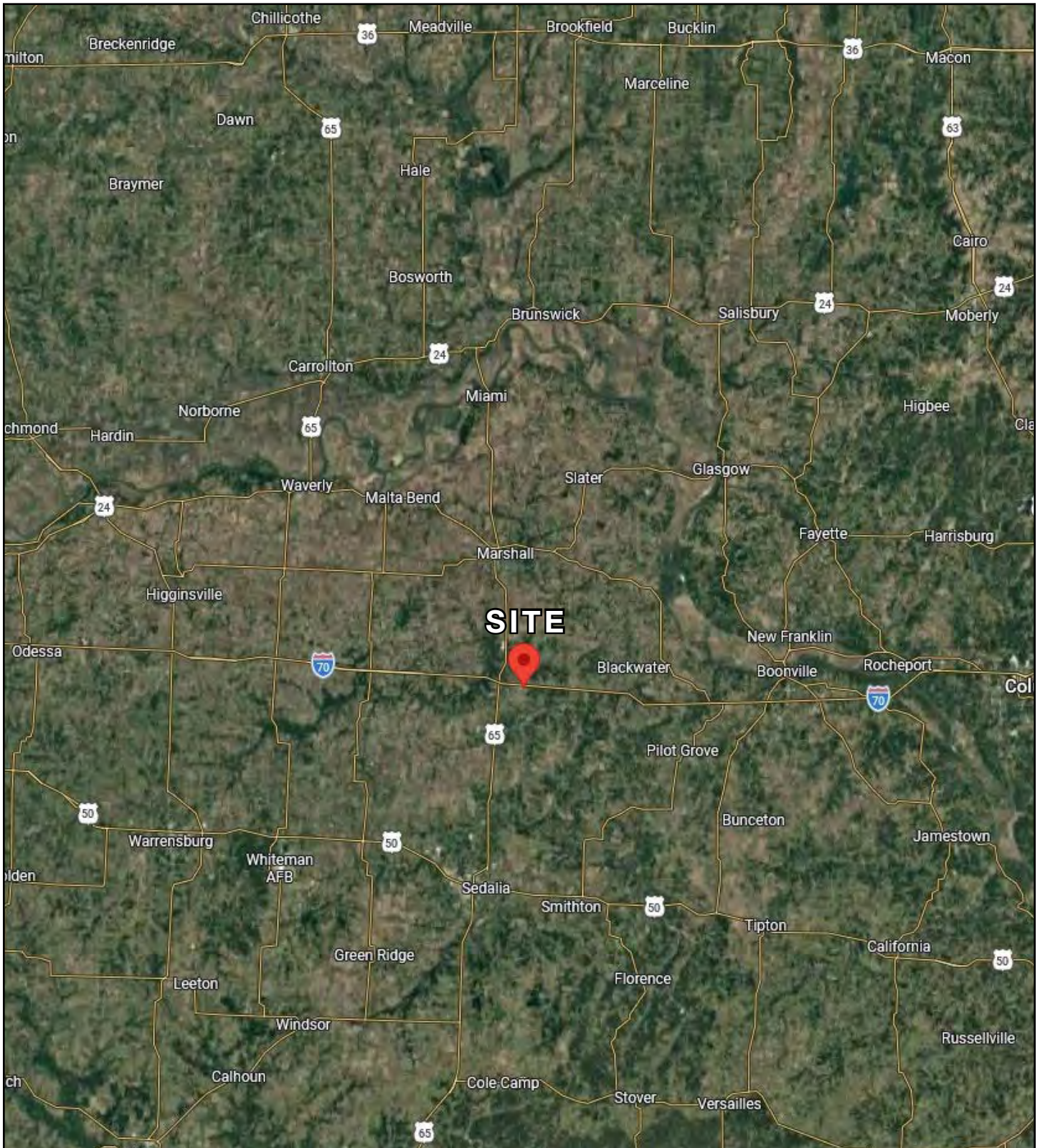
SLAYDE JENNERWEIN | 816.412.7388 | [sjennerwein@blockandco.com](mailto:sjennerwein@blockandco.com)

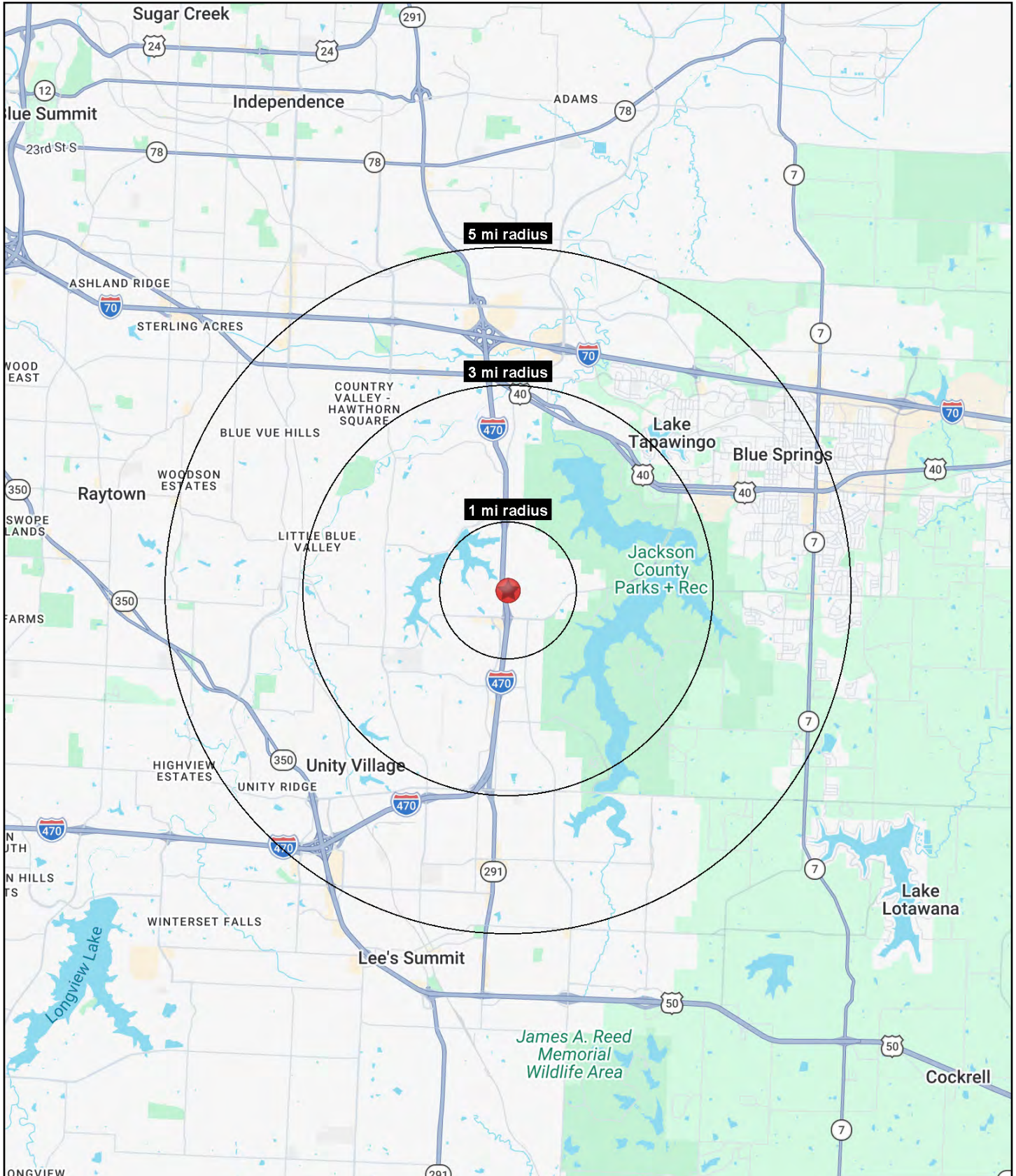
DANIEL BROCATO | 816.412.7303 | [dbrocato@blockandco.com](mailto:dbrocato@blockandco.com)

Exclusive Agents



## AERIAL







# INTERSTATE 70 DEVELOPMENT LAND

## 27699 116th Trail Marshall, Missouri

4201 NE Lakewood Way Lee's Summit, MO 64064	1 mi radius	3 mi radius	5 mi radius
<b>Population</b>			
2026 Estimated Population	8,083	23,723	108,684
2031 Projected Population	8,724	24,678	111,474
2020 Census Population	7,248	23,259	109,988
2010 Census Population	5,952	20,706	100,570
Projected Annual Growth 2026 to 2031	1.6%	0.8%	0.5%
Historical Annual Growth 2010 to 2026	2.2%	0.9%	0.5%
2026 Median Age	42.6	43.7	40.0
<b>Households</b>			
2026 Estimated Households	3,219	9,448	44,704
2031 Projected Households	3,453	9,785	45,664
2020 Census Households	2,764	9,066	43,718
2010 Census Households	2,243	7,950	39,482
Projected Annual Growth 2026 to 2031	1.5%	0.7%	0.4%
Historical Annual Growth 2010 to 2026	2.7%	1.2%	0.8%
<b>Race and Ethnicity</b>			
2026 Estimated White	77.1%	77.8%	74.3%
2026 Estimated Black or African American	13.2%	12.6%	14.5%
2026 Estimated Asian or Pacific Islander	3.1%	2.7%	2.2%
2026 Estimated American Indian or Native Alaskan	0.2%	0.2%	0.3%
2026 Estimated Other Races	6.4%	6.6%	8.6%
2026 Estimated Hispanic	5.9%	6.1%	8.0%
<b>Income</b>			
2026 Estimated Average Household Income	\$164,930	\$142,508	\$116,342
2026 Estimated Median Household Income	\$131,685	\$111,056	\$89,232
2026 Estimated Per Capita Income	\$65,764	\$56,887	\$47,916
<b>Education (Age 25+)</b>			
2026 Estimated Elementary (Grade Level 0 to 8)	2.0%	2.0%	1.8%
2026 Estimated Some High School (Grade Level 9 to 11)	1.2%	2.7%	3.0%
2026 Estimated High School Graduate	18.1%	19.9%	25.6%
2026 Estimated Some College	20.1%	21.9%	22.6%
2026 Estimated Associates Degree Only	5.5%	6.1%	8.6%
2026 Estimated Bachelors Degree Only	30.1%	27.0%	23.6%
2026 Estimated Graduate Degree	23.0%	20.5%	14.7%
<b>Business</b>			
2026 Estimated Total Businesses	440	1,138	4,516
2026 Estimated Total Employees	2,847	9,801	44,213
2026 Estimated Employee Population per Business	6.5	8.6	9.8
2026 Estimated Residential Population per Business	18.4	20.8	24.1

©2026, Sites USA, Chandler, Arizona, 480-491-1112 Demographic Source: Applied Geographic Solutions 5/2026, TIGER Geography - RS1